

IEC Appliance Inlet C14 or C18 with Circuit Breaker TA35 2-pole with thermal or thermal-magnetic release

new



Screw-on with IP67 with thermal circuit breaker TA35 and magnetic release



Screw-on with IP67 and IP54 cord connection



Screw-on with IP67 and TA35 in white with black printed symbols



See below:  
[Approvals and Compliances](#)

### Description

- Panel mount :
- Screw-on version from front or rear side, snap-in version front side Appliance Inlet , protection class I or II , Circuit breaker type TA35 , 2-pole , with thermal or thermal-magnetic release
- Pre-wired coupling
- V-Lock notch standard
- Quick connect terminal 6.3 x 0.8 mm

### Unique Selling Proposition

- With sealing: IP54 under load, IP67 towards housing
- Thermal or thermal-magnetic circuit breaker; thermal-magnetic release fast acting or with time lag
- Recessed rocker prevents accidental manipulation
- Various mounting options

### Characteristics

- Connector and circuit breaker are prewired
- Circuit Breaker thermal or thermal-magnetic, non-illuminated or illuminated
- Suitable for use in equipment according to IEC/UL 62368-1

### Other versions on request

- Version without pre-wiring from inlet to circuit breaker

### References

Substitute for type [6135](#)

Component: circuit breakers [TA36 Rocker](#); [TA35 Rocker 2Pole](#)

Alternative: version with line filter [DG12](#)

### Weblinks

[pdf data sheet](#), [html datasheet](#), [General Product Information](#), [Approvals](#), [Distributor-Stock-Check](#), [Accessories](#), [Detailed request for product](#)

Inlet Connector C14 / C18 also available without seal. The V-Lock cord latching system prevents against accidental removal of the power supply.

### Technical Data

|                                   |                                                                                         |
|-----------------------------------|-----------------------------------------------------------------------------------------|
| Ratings IEC                       | 10 A / 250 VAC; 50 Hz                                                                   |
| Ratings UL/CSA                    | 15 A / 250 VAC; 60 Hz                                                                   |
| Dielectric Strength               | > 2.5 kVAC between L-N<br>> 3 kVAC between L/N-PE<br>(1 min/50 Hz)                      |
| Allowable Operation Temperature   | -25 °C to 60 °C                                                                         |
| IP-Protection                     | Front Side IP40 / IP67 acc. to IEC 60529                                                |
| Protection against electric shock | Suitable for appliances with protection class I or II acc. to IEC 61140                 |
| Terminal                          | Quick connect terminals 6.3 x 0.8 mm                                                    |
| Panel Thickness S                 | Screw: max 8 mm<br>Recommended torque min 0.25 Nm<br>Snap-in : S = 1/1.2/1.5/2/2.5/3 mm |
| Material: Housing                 | Thermoplastic, black, UL 94V-0                                                          |

|                         |                                                                                                                                                   |
|-------------------------|---------------------------------------------------------------------------------------------------------------------------------------------------|
| Appliance inlet/-outlet | C14 / C18 acc. to IEC 60320-1<br>UL 60320-1, CSA C22.2 no. 60320-1<br>(for cold conditions) pin-temperature 70 °C, 10 A, Protection Class I or II |
| Circuit Breakers        | Acc. IEC/EN 60934, UL 1077, CSA 22.2 no. 235<br>2-pole rocker switch, illuminated or non-illuminated.                                             |

### Approvals and Compliances





Detailed information on product approvals, code requirements, usage instructions and detailed test conditions can be looked up in [Details about Approvals](#)

SCHURTER products are designed for use in industrial environments. They have approvals from independent testing bodies according to national and international standards. Products with specific characteristics and requirements such as required in the automotive sector according to IATF 16949, medical technology according to ISO 13485 or in the aerospace industry can be offered exclusively with customer-specific, individual agreements by SCHURTER.

## Approvals




The approval mark is used by the testing authorities to certify compliance with the safety requirements placed on electronic products.

Approval Reference Type: DG11

| Approval Logo                                                                    | Certificates                  | Certification Body | Description                                                |
|----------------------------------------------------------------------------------|-------------------------------|--------------------|------------------------------------------------------------|
|  | <a href="#">VDE Approvals</a> | VDE                | Certificate Number: 40048151                               |
|  | <a href="#">UL Approvals</a>  | UL                 | UR File Number: E96454                                     |
|  | <a href="#">CCC Approvals</a> | CCC                | CCC Certificate Number: 2019180204007932, 2019180204007907 |
|  | <a href="#">KTL Approvals</a> | KTL                | Korea Testing Laboratory                                   |

## Product standards

Product standards that are referenced

| Organization                                                                     | Design                | Standard              | Description                                                           |
|----------------------------------------------------------------------------------|-----------------------|-----------------------|-----------------------------------------------------------------------|
|  | Designed according to | IEC 60320-1           | Appliance couplers for household and similar general purposes         |
|  | Designed according to | UL 60320-1            | Standard for Attachment Plugs and Receptacles                         |
|  | Designed according to | CSA C22.2 no. 60320-1 | General Use Receptacles, Attachment Plugs, and Similar Wiring Devices |







## Application standards

Application standards where the product can be used

| Organization                                                                      | Design                         | Standard       | Description                                                                                   |
|-----------------------------------------------------------------------------------|--------------------------------|----------------|-----------------------------------------------------------------------------------------------|
|  | Suitable for applications acc. | IEC/UL 62368-1 | Audio/video, information and communication technology equipment - Part 1: Safety requirements |

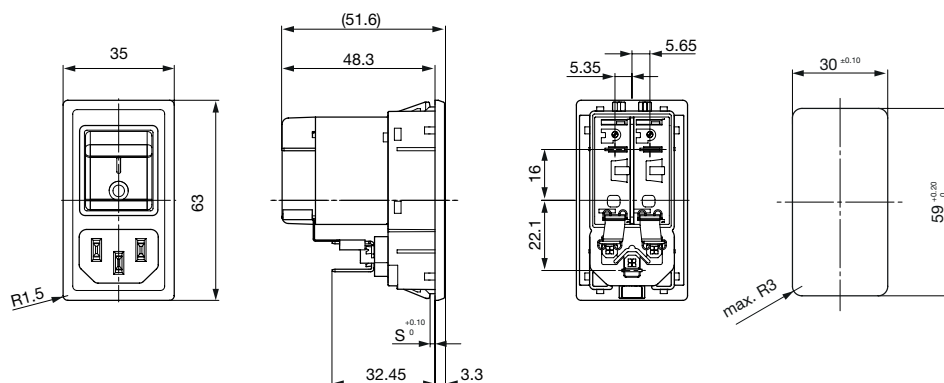
## Compliances

The product complies with following Guide Lines

| Identification                                                                     | Details                                        | Initiator   | Description                                                                                                                                                                                                                  |
|------------------------------------------------------------------------------------|------------------------------------------------|-------------|------------------------------------------------------------------------------------------------------------------------------------------------------------------------------------------------------------------------------|
|  | <a href="#">CE declaration of conformity</a>   | SCHURTER AG | The CE marking declares that the product complies with the applicable requirements laid down in the harmonisation of Community legislation on its affixing in accordance with EU Regulation 765/2008.                        |
|  | <a href="#">UKCA declaration of conformity</a> | SCHURTER AG | The UKCA marking declares that the product complies with the applicable requirements laid down in the British Amendment of Regulation (EC) 765/2008.                                                                         |
|  | <a href="#">RoHS</a>                           | SCHURTER AG | Directive RoHS 2011/65/EU, Amendment (EU) 2015/863                                                                                                                                                                           |
|  | <a href="#">China RoHS</a>                     | SCHURTER AG | The law SJ / T 11363-2006 (China RoHS) has been in force since 1 March 2007. It is similar to the EU directive RoHS.                                                                                                         |
|  | <a href="#">REACH</a>                          | SCHURTER AG | On 1 June 2007, Regulation (EC) No 1907/2006 on the Registration, Evaluation, Authorization and Restriction of Chemicals 1 (abbreviated as "REACH") entered into force.                                                      |
|  |                                                | SCHURTER AG | V-Lock system are based on a matching plug-dose combination. The connector is equipped with a notch intended for use with the latching cordset. The cord latching system prevents against accidental removal of the cordset. |

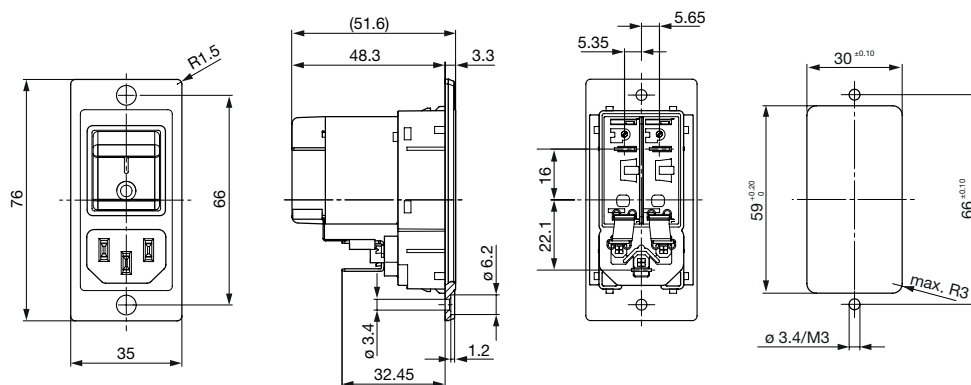
## Dimensions [mm]

Snap-in mounting for front mount IP40

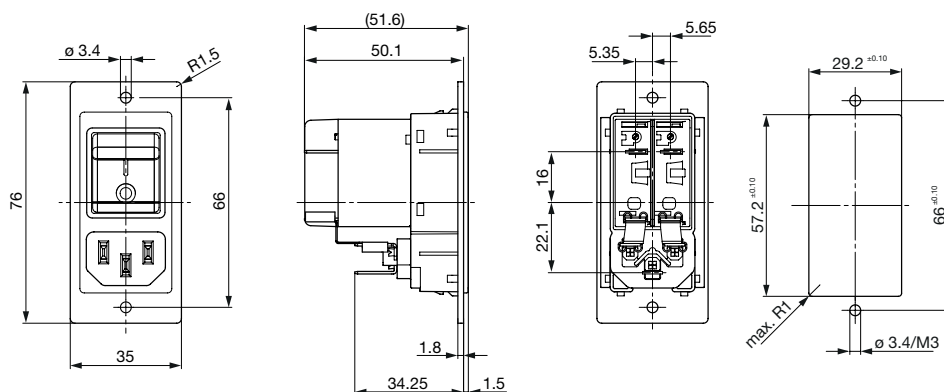


S = Panel thickness

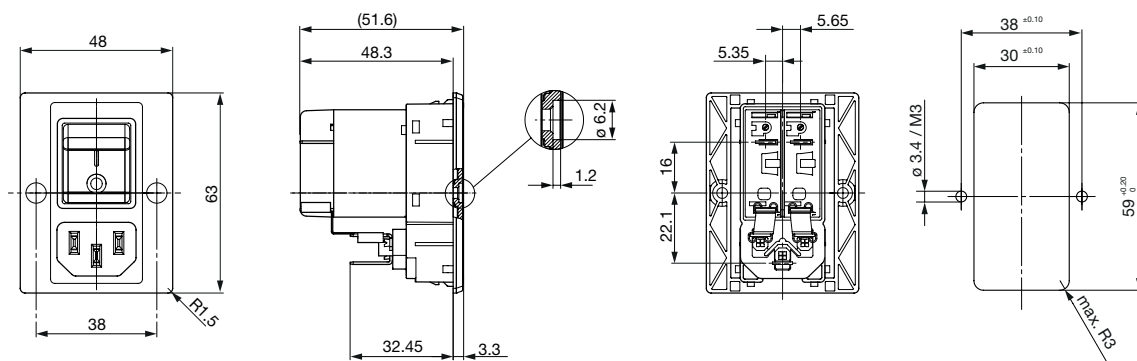
Screw-on mounting version A for front mount IP40



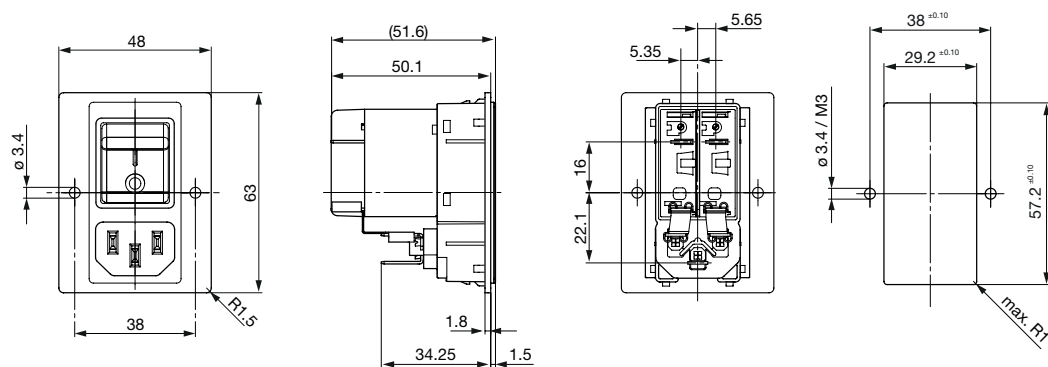
Screw-on mounting Version A for rear mount IP40



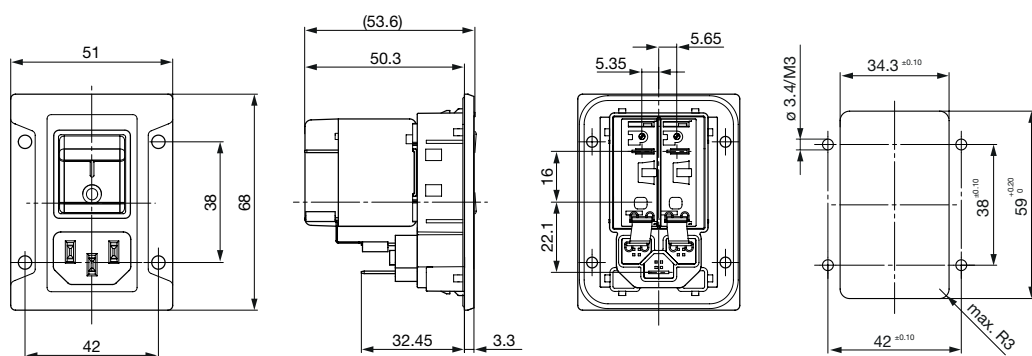
Screw-on mounting Version B for front mount IP40



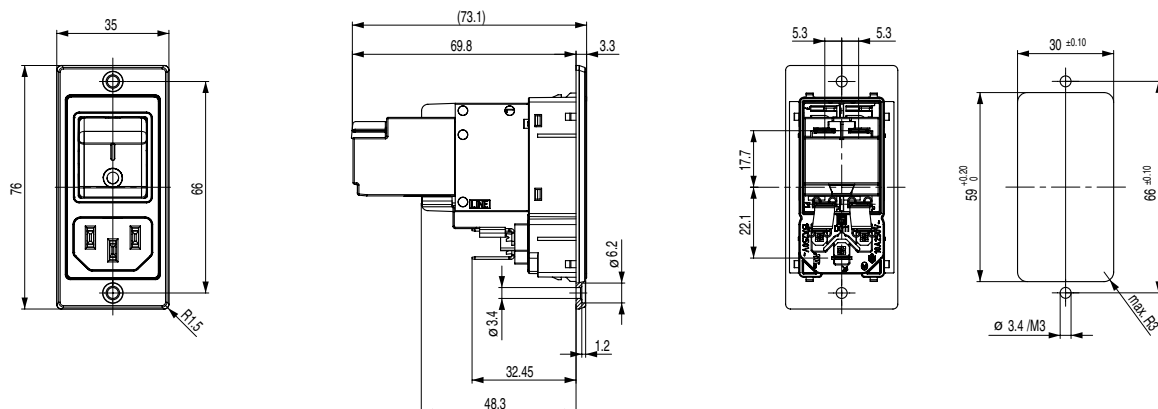
Screw-on mounting version B for rear mount IP40



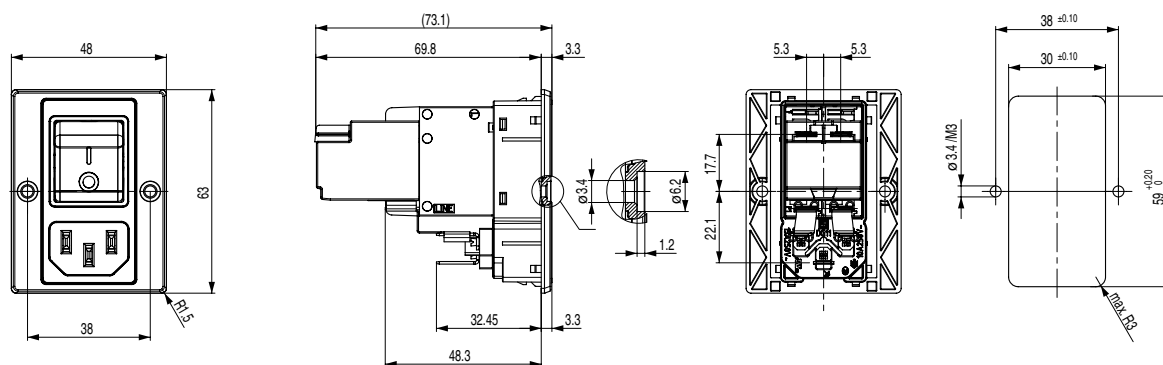
Screw-on mounting for front mount IP67



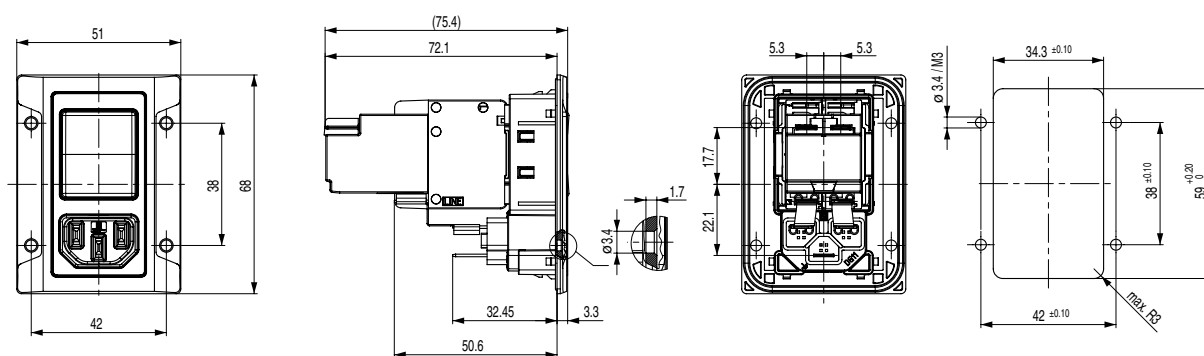
Screw-on mounting Version A for front mount IP40 with magnetic release



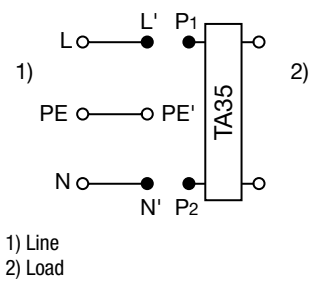
Screw-on mounting Version B for front mount IP40 with magnetic release



Screw-on mounting for front mount IP67 with magnetic release



Diagrams



Effect of ambient temperature

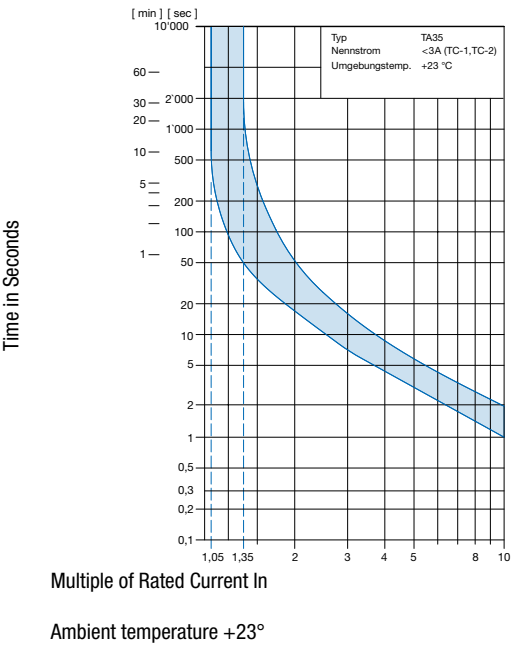
The units are calibrated for an ambient temperature of +23°C. To determine the rated current for a lower or higher ambient temperature, use a correction factor (typical value) from the table below:

| Ambient Temperature [°C] | Correction factor |
|--------------------------|-------------------|
| -30                      | 0.76              |
| -20                      | 0.81              |
| 0                        | 0.90              |
| +23                      | 1.00              |
| +40                      | 1.03              |
| +50                      | 1.04              |
| +60                      | 1.06              |

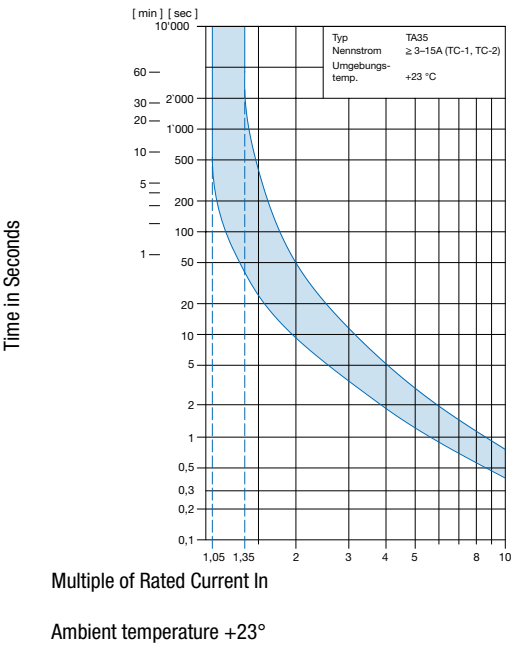
Example: Rated current = 5 A, Environmental temperature = 50 °C --> Correction factor = 1.04, Resulting current = 5.2 A --> Round to next higher rated current: 6 A

Time-Current-Curves

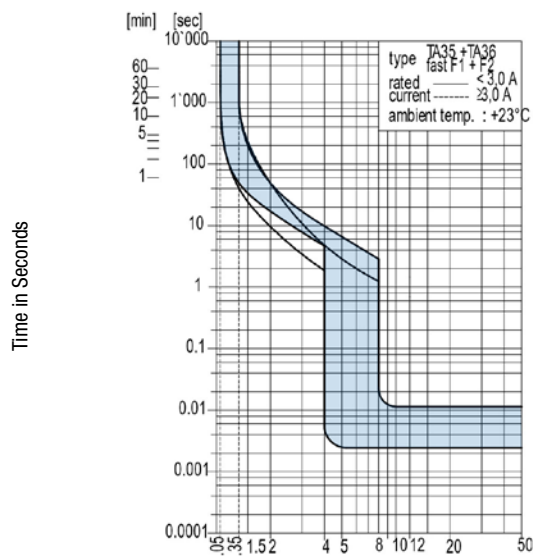
Tripping Characteristics thermal  $I_n < 3\text{ A}$



Tripping Characteristics thermal  $I_n \geq 3 \dots \leq 15\text{ A}$



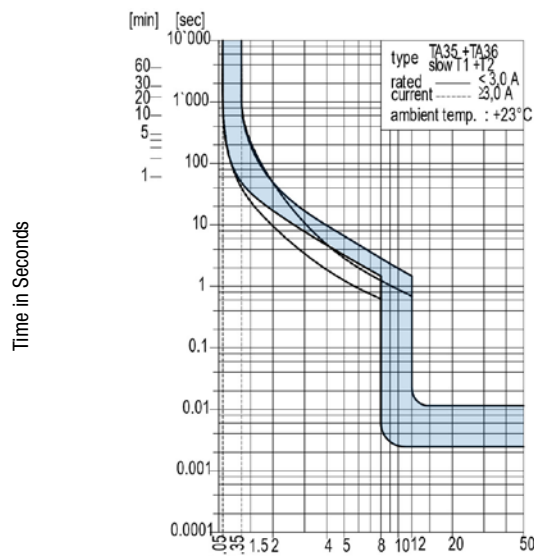
Tripping Characteristics thermal magnetic fast acting



Multiple of Rated Current In

Ambient temperature +23°

Tripping Characteristics thermal magnetic time lag

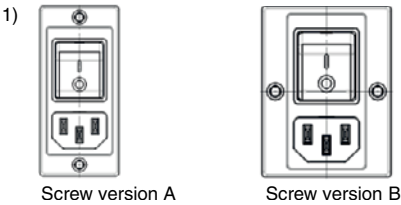


Multiple of Rated Current In

Ambient temperature +23°

Order number key  
Configuration Code

| Typ  | Configuration Code<br>(Example) TA35 |           |            |  | Color                                                                                                                                                                                                                                                                                                                                                                             |
|------|--------------------------------------|-----------|------------|--|-----------------------------------------------------------------------------------------------------------------------------------------------------------------------------------------------------------------------------------------------------------------------------------------------------------------------------------------------------------------------------------|
| DG11 | C B D W F 1 2 0 C 0                  | 000-C6135 | XXX-XXX-00 |  | 0 Black<br>1 White                                                                                                                                                                                                                                                                                                                                                                |
|      | see table 1                          |           |            |  | Panel Mounting <sup>1)</sup><br>00 Screw version A front mounting<br>01 Screw version B front mounting<br>02 Screw version A rear mounting<br>03 Screw version B rear mounting<br>10 Snap-in 1.0 mm<br>12 Snap-in 1.2 mm<br>15 Snap-in 1.5 mm<br>20 Snap-in 2.0 mm<br>25 Snap-in 2.5 mm<br>30 Snap-in 3.0 mm<br>88 Screw version front mounting<br>(sealed towards housing, IP67) |
|      |                                      |           |            |  | Terminal PE<br>0 Without (PCII)<br>1 QC 6.3x0.8 mm                                                                                                                                                                                                                                                                                                                                |
|      |                                      |           |            |  | Terminal N<br>1 QC 6.3x0.8 mm (unwired)<br>3 Connection to TA35 (wired)                                                                                                                                                                                                                                                                                                           |
|      |                                      |           |            |  | Terminal L<br>1 QC 6.3x0.8 mm (unwired)<br>3 Connection to TA35 (wired)                                                                                                                                                                                                                                                                                                           |





## ORDER CODE

Table 1 Selection for type TA35

Order example

| Number of switched poles  |                            | 2-pole                   |                          |
|---------------------------|----------------------------|--------------------------|--------------------------|
| Number of protected poles |                            | 1                        | 2                        |
|                           |                            |                          |                          |
| Switch                    | without illumination       | <b>CBT</b>               | <b>CBD</b>               |
| Switch                    | illuminated 240 V<br>120 V | <b>C12</b><br><b>C14</b> | <b>C32</b><br><b>C34</b> |

Other versions on request

**CBD** **W** **F** **120** **C0**

## Colours

|          | Switch front | Rocker          |                    |
|----------|--------------|-----------------|--------------------|
|          |              | non-illuminated | illuminated        |
| <b>W</b> | black        | white           | —                  |
| <b>B</b> | black        | black           | —                  |
| <b>3</b> | black        | —               | red transparent    |
| <b>4</b> | black        | —               | green transparent  |
| <b>6</b> | black        | —               | orange transparent |

Other colours on request

## Rocker legend

|          | Surface  | Illustration | Colour of print |
|----------|----------|--------------|-----------------|
| <b>F</b> | embossed | — ○          |                 |
| <b>H</b> | printed  |              | white           |
| <b>K</b> | printed  |              | black           |
| <b>L</b> | printed  | — ○          | white           |
| <b>M</b> | printed  | — ○          | black           |

Other legends on request

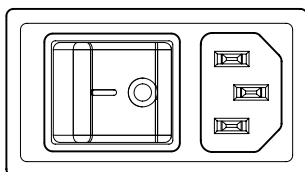
## Rated current $I_n$ (A)

| $I_n$ | Code       | $I_n$ | Code        |
|-------|------------|-------|-------------|
| 1,0   | <b>J10</b> | 8,0   | <b>080</b>  |
| 2,0   | <b>J20</b> | 10,0  | <b>100</b>  |
| 4,0   | <b>040</b> | 12,0  | <b>120*</b> |
| 5,0   | <b>050</b> | 15,0  | <b>150*</b> |
| 6,0   | <b>060</b> |       |             |

Other rated currents on request

\*) UL / CSA only


Position of the rocker  
legend e.g. I / O



## Characteristic magnetic Release

|           |                             |
|-----------|-----------------------------|
| <b>C0</b> | Standard, no other features |
| <b>T1</b> | 1 pole, slow                |
| <b>T2</b> | 2 pole, slow                |
| <b>F1</b> | 1 pole, fast                |
| <b>F2</b> | 2 pole, fast                |

Variants

| Circuit Breaker   |                    |                 |                  | Connector        |       |                  |               |  | Order Number |
|-------------------|--------------------|-----------------|------------------|------------------|-------|------------------|---------------|-------------------------------------------------------------------------------------|--------------|
| Rated Current [A] | Rocker colour      | Illumination    | Magnetic Release | Protection Class | Color | Mounting         | IP-Protection |                                                                                     |              |
| 10                | orange transparent | illuminated     | none             | I                | black | Snap-in mounting | IP40          |                                                                                     | 3-107-924    |
| 10                | white              | non-illuminated | none             | I                | black | Screw-on version | IP67 / IP54   |                                                                                     | 3-108-454    |
| 10                | black              | non-illuminated | none             | I                | black | Screw version B  | IP40          |                                                                                     | 3-108-463    |
| 10                | white              | non-illuminated | none             | I                | black | Snap-in mounting | IP40          |                                                                                     | 3-109-713    |
| 10                | white              | non-illuminated | none             | I                | black | Screw version B  | IP40          |                                                                                     | 3-109-714    |
| 10                | white              | non-illuminated | none             | I                | black | Screw version A  | IP40          |                                                                                     | 3-109-715    |
| 10                | white              | non-illuminated | none             | II               | black | Screw-on version | IP67 / IP54   |                                                                                     | 3-140-609    |
| 10                | white              | non-illuminated | none             | I                | white | Screw-on version | IP67 / IP54   |                                                                                     | 3-140-691    |
| 10                | white              | non-illuminated | none             | II               | white | Screw-on version | IP67 / IP54   |                                                                                     | 3-140-712    |
| 10                | white              | non-illuminated | Slow             | I                | black | Screw-on version | IP67 / IP54   |                                                                                     | 3-153-377    |
| 10                | white              | non-illuminated | Fast             | I                | black | Screw-on version | IP67 / IP54   |                                                                                     | 3-153-699    |
| 10                | white              | non-illuminated | Slow             | I                | white | Screw-on version | IP67 / IP54   |                                                                                     | 3-153-701    |
| 10                | white              | non-illuminated | Fast             | I                | white | Screw-on version | IP67 / IP54   |                                                                                     | 3-153-714    |
| 12                | white              | non-illuminated | none             | II               | black | Screw version A  | IP40          |                                                                                     | 3-153-961    |
| 15                | white              | non-illuminated | none             | I                | black | Snap-in mounting | IP40          |                                                                                     | 3-109-716    |
| 15                | white              | non-illuminated | none             | I                | black | Screw version B  | IP40          | ●                                                                                   | 3-109-717    |
| 15                | white              | non-illuminated | none             | I                | black | Screw version A  | IP40          |                                                                                     | 3-109-718    |
| 15                | white              | non-illuminated | none             | I                | black | Screw-on version | IP67 / IP54   |                                                                                     | 3-109-719    |
| 15                | white              | non-illuminated | Slow             | I                | black | Screw version B  | IP40          |                                                                                     | 3-153-704    |
| 15                | white              | non-illuminated | Fast             | I                | black | Screw version B  | IP40          |                                                                                     | 3-153-716    |

Availability for all products can be searched real-time: <https://www.schurter.com/en/info-center/support-tools/stock-check-distributors>

More information in the HTML data sheet on the variant table

|                |        |
|----------------|--------|
| Packaging unit | 10 Pcs |
|----------------|--------|

Accessories

Description



RC320  
 Rear Cover for Power Entry Module

Mating Outlets/Connectors shuttered

Category / Description



[Connector Overview complete](#)

4783 Mounting: Power Cord, 3 x 1 mm<sup>2</sup> / 3 x 18 AWG, Cable, Connector: IEC C13

4783



[Power Cord Overview complete](#)

SC54C13KS, Overview, V-Lock cord retaining, diverse Connector IEC C13, diverse, black

SC54C13KS