

battery type: Lithium Button Cell
battery size: CR2450
chemical system: Lithium Manganese Dioxide

Conditions

nominal voltage: 3.0 V
open circuit voltage: 3.0...3.4 V (new battery)
 2.9...3.4 V (after 1 year storage at 20°C)

all measurements at 22 ± 2°C ambient

capacity rated: 620 mAh (discharge at 7.5kΩ resistive load; 24hours/day End Voltage (EV): 2.0V)
minimum: 580 mAh (discharge at 7.5kΩ resistive load; 24hours/day End Voltage (EV): 2.0V)

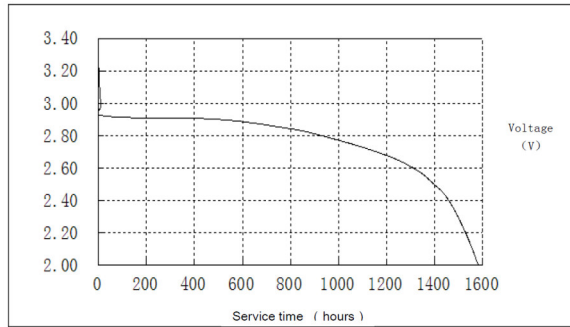
Service Life

at 7.5kΩ load; 24hours/day
 ≥ 1500 h EV: 2.0V (new battery (tested within 60 days after production))
 ≥ 1470 h EV: 2.0V (after 12 months)
 Standard discharge time ≥ 195 h at 1kΩ load (for QC measurement)

Discharge currents

standard: 0.4 mA
 max. recommended current under continuous discharge: 4 mA
 max. recommended current under pulse discharge: 18 mA

Discharge diagram:



Discharge method: 7.5KΩ, 24 hours/day EV 2.0V
 temperature of 20±2°C

shelf life: 5 years under proper storage conditions (ta: ≤ 22°C; RH: 60 ± 15%)

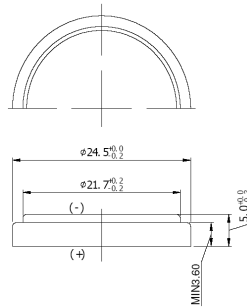
operating temperature range: - 20...60 °C

storage temperature: 0...35 °C (recommended)


mechanical specifications:

outer battery dimensions
 diameter: 24.0mm +0/-0.3mm
 height: 5.0mm +0/-0.2mm

drawing



nominal weight: 6.1 g

	ANSMANN Specifications for model:	Lithium Button Cell HyCell CR2450
	data sheet no. / part no.	
	supplier no.	705172
	author / date	TG / 15.08.2024