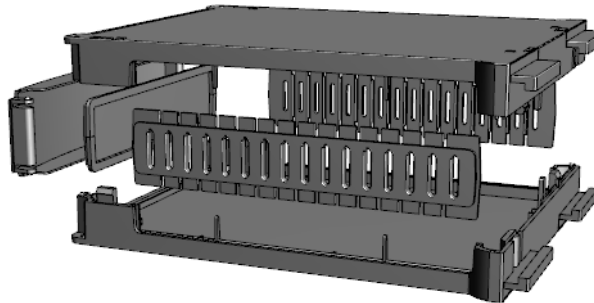
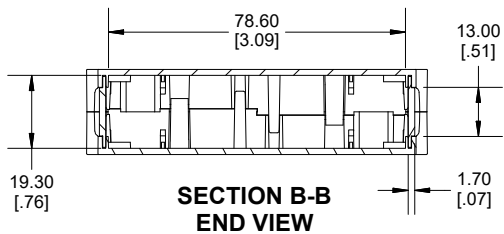
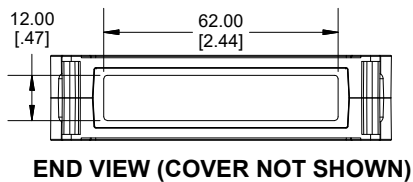
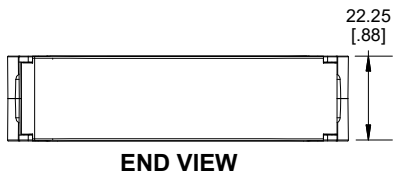


**SECTION C-C  
TOP VIEW**



Enclosures can be Factory Modified (Milling, Drilling, Printing etc.)  
Contact Factory ([modshop@hammfg.com](mailto:modshop@hammfg.com)) for quotes  
Solid models of this enclosure available in .stp or .x\_t  
(Part number and text placement/orientation on our products are subject to change,  
we do not recommend using them as a locating reference for modification purposes)

**NOTE**

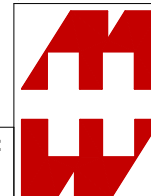
Purchased enclosure includes base, cover, front panel,  
front cover and 2 side panels.  
Enclosure is made from polycarbonate.

**PART NUMBERS**

**1597DIN**

Rail enclosure grey

1597DINM22GY



**HAMMOND  
MANUFACTURING®**

**1597DINM22**

[www.hammondmfg.com](http://www.hammondmfg.com)

Dimensions:  
mm  
[inches]