

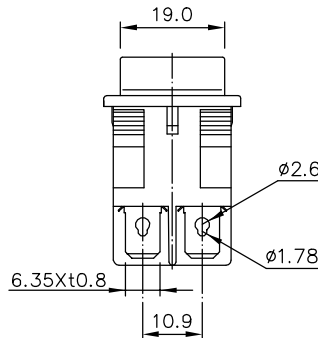
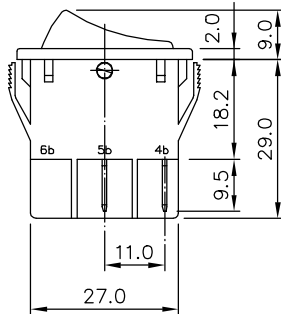
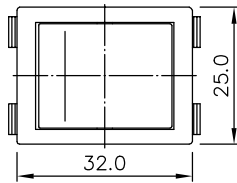


**3077  
SERIES**

## SPECIFICATION



<b>RATING</b>	: 20RA 250V~ (UL,C-UL,ENEC) 3/4HP 125/ 250VAC (UL,C-UL) 20(8)A 250V~ T85 (UL,C-UL,ENEC) 10(6)A 250V~ 5E4 (UL,C-UL,ENEC)
<b>INSULATION RESISTANCE</b>	: DC 500V 100MΩ OR MORE
<b>CONTACT RESISTANCE</b>	: DC 2-4V 1A 20mΩ OR LESS
<b>WITHSTAND VOLTAGE</b>	: AC 1500V FOR 1 Min
<b>AMBIENT TEMPERATURE</b>	: 0 °C TO 55 °C
<b>ELECTRICAL LIFE</b>	: 10,000 CYCLES



W	PANEL THICK
30.1	0.75 ~ 1.25
30.2	1.25 ~ 2.00
30.6	2.00 ~ 3.00

MOUNTING HOLE  
(FOR REFERENCE)



## HOW TO ORDER

3077 - □ - □ - □ - □ - □ - □ - □ - □

KNOB	PRINT	LIGHT	TERMINAL	CIRCUIT	BODY	KNOB COLOR	BODY COLOR
K1: MATT K3: GLOSS 	P0: NONE P1: 	L0: NONE L1: YELLOW L2: GREEN L3: BLUE	T1: 6.35x0.8  T5: 	C01: ON-OFF DPST C02: ON-ON DPDT C03: (ON)-OFF DPST	B01 	BK: BLACK BU: BLUE GN: GREEN RD: RED WT: WHITE	BK: BLACK WT: WHITE
K2: 	P2: 						
K4: PC 	P3:  P4: PC 						
	P5: 						