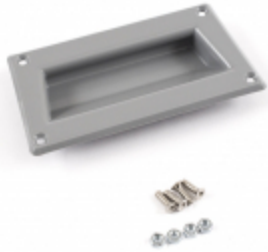


Styled Plastic Handles 1427 & M Series

Features

- Materials are ABS plastic, Polycarbonate, Polystyrene & Vinyl (See Table)
- Sold individually
- Hardware included.

Gallery



Styled Plastic Handles

Part No. (Sold Individually)	Handle Material/Finish	Handle Overall Dimensions		
		Length	Height	Thread
M250-663	Black Polycarbonate	2.95	1.26	M3-0.5
1427R	Grey ABS Plastic	3.98	2.47	M3-0.5
M250-1003	Black Polycarbonate	4.37	1.42	M4-0.7
1427F1	Black Polyethylene	5.97	2.55	#4-40
M250-1393	Black ABS Plastic	6.06	1.65	M4-0.7
1427J	Black Vinyl	9.06	1.00	#10-32

Tags: **handle, pull handle, plastic handle**

Data subject to change without notice.